



rotunda

by enableaid



The Original Patient Transfer Aid

- A dignified and safe transfer experience for the patient and carer
- Robust, strong and built to last

Wherever the setting: hospital, care home, hospice, mobility assessment centre, school or a person's own home, the issues associated with the everyday task of transferring people are greatly reduced with our patient transfer aids.



*Hand built by
craftsmen in the UK*

Standard Frame Rotunda
Shown here with Knee Support.

www.enableaid.co.uk

Tel: 01440 702811 Email: enquiries@enableaid.co.uk

A safer, more comfortable and dignified experience for the patient

The patients fear of falling is diminished with the Rotunda's semi encompassing frame giving an assuring sense of security and peace of mind. The Rotunda takes the effort out of patient transfers.

The wide turntable provides a stable and safe area to stand on while smoothly rotating between five different locking positions, ensuring patient safety during the transfer.

The Rotunda is not designed to transport patients.

All Rotundas have a maximum turntable load of 250kg (39 stones).

Robust, strong and built to last

Handmade in Haverhill, Suffolk since 1987, the Rotunda platform is the original patient transfer aid - hundreds are used in NHS and private hospitals, care homes and residences throughout the UK.

Manufactured from premium steel the Rotunda is robust, strong and built to last by our team of craftsmen.



www.enableaid.co.uk

The Original Patient Transfer Aid

The Rotunda Models



Standard Rotunda (RS1G)

Shown with knee support (RAKS3)

Unit Weight: 15kgs

Overall Height: 1015mm

Handle Height: (from floor) 740mm

Width between handles: 530mm



Bariatric Rotunda (RB1G)

Shown with knee support (RAKS3)

Unit Weight: 15kgs

Overall Height: 1015mm

Handle Height: (from floor) 740mm

Width between handles: 630mm



Height Adjustable Rotunda (RSA1)

Shown with knee support (RAKS3)

Unit Weight: 15kgs

Overall Height:

960mm - 1090mm

Height at Handle Grip:

(from floor)

720mm - 930mm

Width between handles:

420mm

All models:
Turntable Diameter:
457mm

Base Footprint:
670mm x 670mm

All models will pass
through a standard
door frame

ATTENTION: Patients must be able to weight bear, risk assess before use

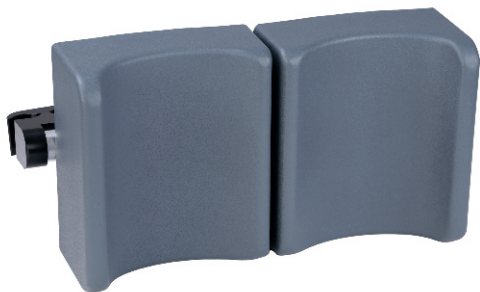
Email: enquiries@enableaid.co.uk

Handmade in Haverhill, Suffolk, England

Accessories to Compliment your Rotunda

All accessories can be retro fitted and are suitable for all models.

Knee Support RAKS3



An easy clean, moulded Knee Support to provide extra comfort.

Raising Block RARB4 103mm



Light weight 103mm high aluminium block. Fits neatly inside the base of the Rotunda.

Gutter Arm Supports RAASH2



Moulded to add comfort and aid weight bearing.

Replacement Parts

- Foot Mat
- Foot guard
- Handles
- Yellow Base Protectors

Please contact us with your requirements

Do you need further information? Do you need prices?

Please contact us - we're happy to help!

www.enableaid.co.uk

Enable Aid Limited 1 Rookwood Way, Haverhill, Suffolk CB9 8PB

Tel: 01440 702811 Email: enquiries@enableaid.co.uk