



# rotunda

by enableaid



## The Original Patient Transfer Aid

- A dignified and safe transfer experience for the patient and carer
- Robust, strong and built to last

Wherever the setting, hospital, care home, hospice, mobility assessment centre, school or a person's own home, the issues associated with the everyday task of transferring patients can be greatly reduced with our patient transfer aids.



*Hand built by  
craftsmen in the UK*

**Standard Frame Rotunda**  
Shown here with Knee Support.

[www.enableaid.co.uk](http://www.enableaid.co.uk)

Tel: 01440 702811 Email: [enquiries@enableaid.co.uk](mailto:enquiries@enableaid.co.uk)

## A safer, more comfortable and dignified experience for the patient



The patient's fear of falling is diminished with the semi-encompassing frame giving the patient an assuring sense of security and peace of mind. The wide turntable provides a stable and safe area for the patient to stand while the transfer takes place, smoothly rotating between five different locking positions ensuring patient safety. The Rotunda takes the effort out of patient transfer. The Rotunda is not designed for patient transportation.

All Rotundas have a maximum turntable load of 250kg (39 stones).



### **Robust, strong and built to last**

Handmade in Haverhill, Suffolk since 1987, the Rotunda platform is the original patient transfer aid - hundreds are used in NHS and private hospitals, care homes and residences throughout the UK.

*Manufactured from premium steel the Rotunda is robust, strong and built to last by our team of craftsmen.*

[www.enableaid.co.uk](http://www.enableaid.co.uk)

**The Original Patient Transfer Aid**

# The Rotunda Models



## ◀ Height Adjustable Rotunda (RSHA1)

Shown with knee support (RAKS3)

Unit Weight: 15kgs

Overall Height:

960mm - 1090mm

Height at Handle Grip:

(from floor) 720mm - 930mm

Width between handles:

420mm



## ▲ Standard Rotunda (RS1)

Shown with knee support (RAKS1)

Unit Weight: 13kgs

Overall Height: 1020mm/40"

Handle Height: (from floor) 780mm/31"

Width between handles: 420mm/16.5"



## ◀ Bariatric Rotunda (RB1)

Shown with knee support (RAKS1)

Unit Weight: 13kgs

Overall Height: 1020mm/40"

Handle Height: (from floor) 780mm/31"

Width between handles: 520mm/20.5"

All models:

Turntable Diameter: 457mm/18"

Base Footprint: 660mm x 618mm 26" x 24.5"

All models will pass through a standard door frame

**ATTENTION:** Patients must be able to weight bear, risk assess before use

Email: [enquiries@enableaid.co.uk](mailto:enquiries@enableaid.co.uk)

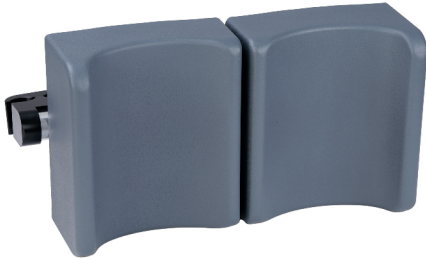
Handmade in Haverhill, Suffolk, England

# Accessories to Compliment your Rotunda

All accessories can be retro fitted and are suitable for all models.

## Knee Support RAKS3

UNIT WEIGHT: 500g



An easy clean, moulded Knee Support to provide extra comfort.

An easy clean, moulded Knee Support to provide extra comfort and aid weight bearing.

## Raising Block

103mm (4") RARB4



New light weight 4" high aluminium block. Fits neatly inside the base of the Rotunda.

## Gutter Arm Supports RAASH2



Moulded to add comfort and aid weight bearing.

## Replacement Parts

- Foot Mat
- Foot guard
- Handles
- Yellow Base Protectors

*Please contact us with your requirements*

*Do you need further information? Do you need a bespoke option? Do you need prices?*

*Please contact us - we're happy to help!*

[www.enableaid.co.uk](http://www.enableaid.co.uk)

Enable Aid Limited 1 Rookwood Way, Haverhill, Suffolk CB9 8PB

Tel: 01440 702811 Email: [enquiries@enableaid.co.uk](mailto:enquiries@enableaid.co.uk)